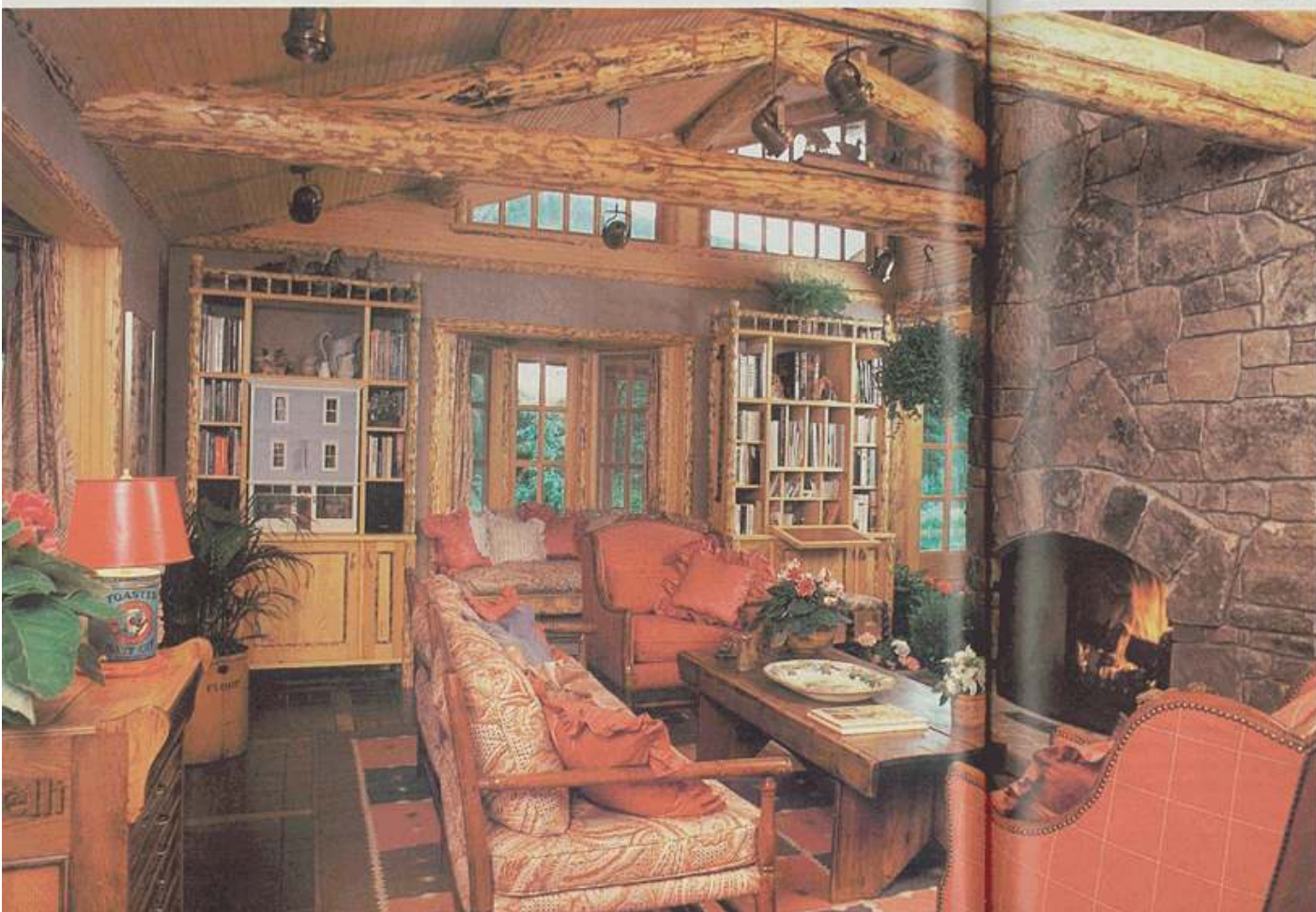


LOG DESIGNS

Handcrafted details evoke the past

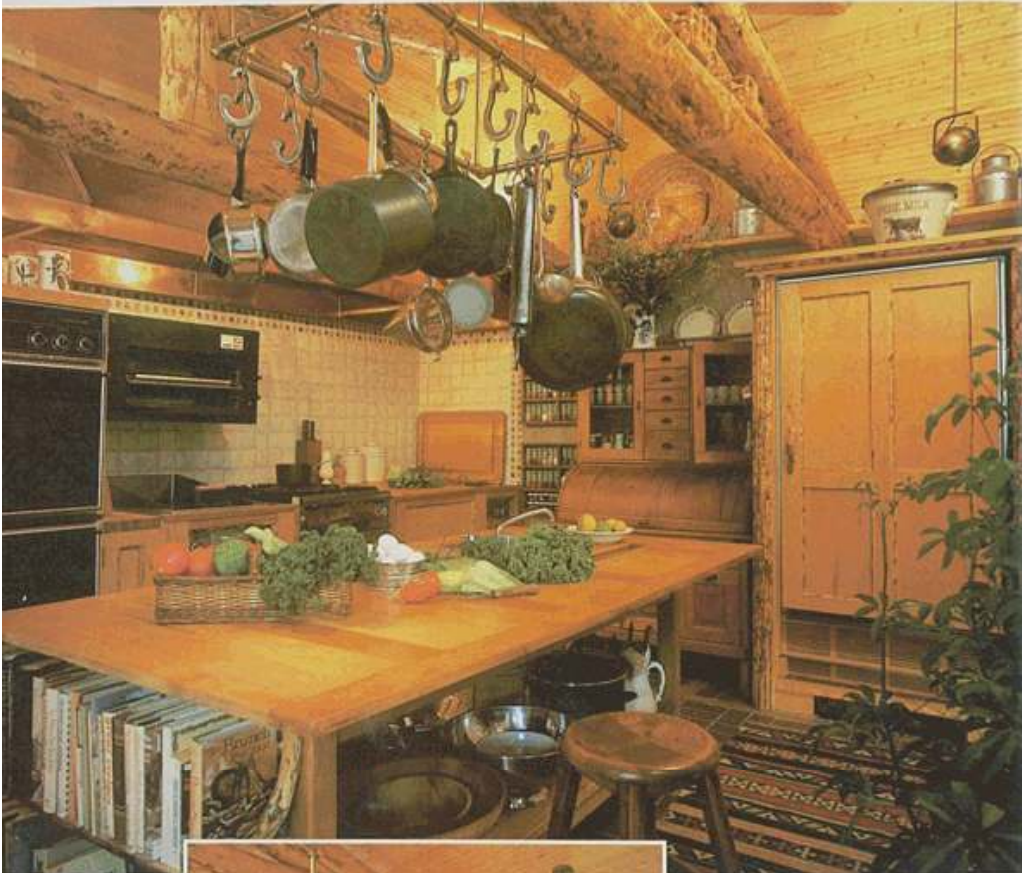


While today's log homes still evoke the warmth and charm of their predecessors, their early crudeness has been replaced by a refinement that is very much in keeping with contemporary design. In this section we present two spacious structures in which old-time building elements have been skillfully blended with such present-day features as expansive window treatments, outdoor living areas, and modern kitchen and bath amenities. With its sweeping deck and covered porches, the summer retreat shown here illustrates a dedication to the simple pleasures of relaxing and enjoying the scenery—in this case a tranquil setting in the Colorado Rockies. To complement the handsome exterior, above, designer Joe Minton of Fort Worth, Texas, worked with the owners and master carpenter Steve Cappellucci to create a one-of-a-kind interior. Using wood and rocks found on the property, Minton and Cappellucci fashioned fine detailing—molding and door trim, slender window mullions, cabinet pulls, ceiling beams—and a massive stone fireplace in the living room, left. The elegant rusticity carries over to the dining room, below, which is linked to the outdoors by a wall of mullioned windows and a glass roof.



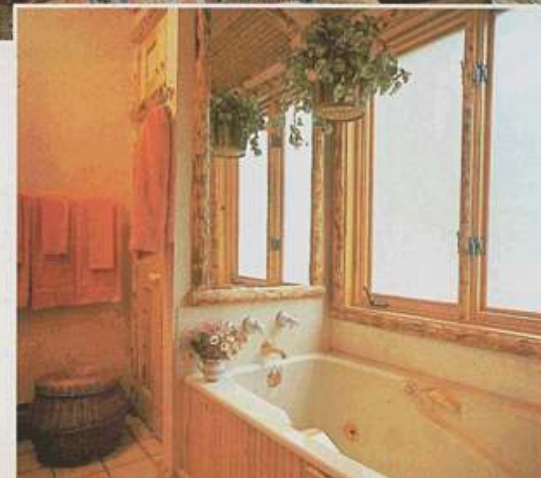
PHOTOGRAPHS BY MICHAEL SCOTT

almost the entire house is designed for entertaining, including a large



The sprawling retreat was custom-made for hospitality. With only one bedroom and two baths in the house (guests occupy cottages on the property), the majority of square footage is allotted to entertainment areas, including a large kitchen, this page, outfitted with all the amenities of a professional work center. Easily accommodating two cooks at a time, the kitchen features two islands for food preparation—one with a wood top for cutting, and one with a marble top for pastry making. The refrigerator is cleverly concealed behind a wood-faced door. A profusion of windows lets

kitchen featuring two work islands



natural light filter into the room. In this open space, both husband and wife can cook while chatting with guests in the dining area and adjacent sitting room. In the master bedroom, above, the meticulous detailing continues in the fine lodgepole trim and beams and a cozy window seat that looks out to a garden. In the bath, right, split-pole trim adroitly echoes the forest outside, viewed through generous windows. The mirror is framed in pine to create the illusion of a bay window, and wainscoting encloses a contemporary whirlpool tub. Light ceramic tile flooring complements the wood.